

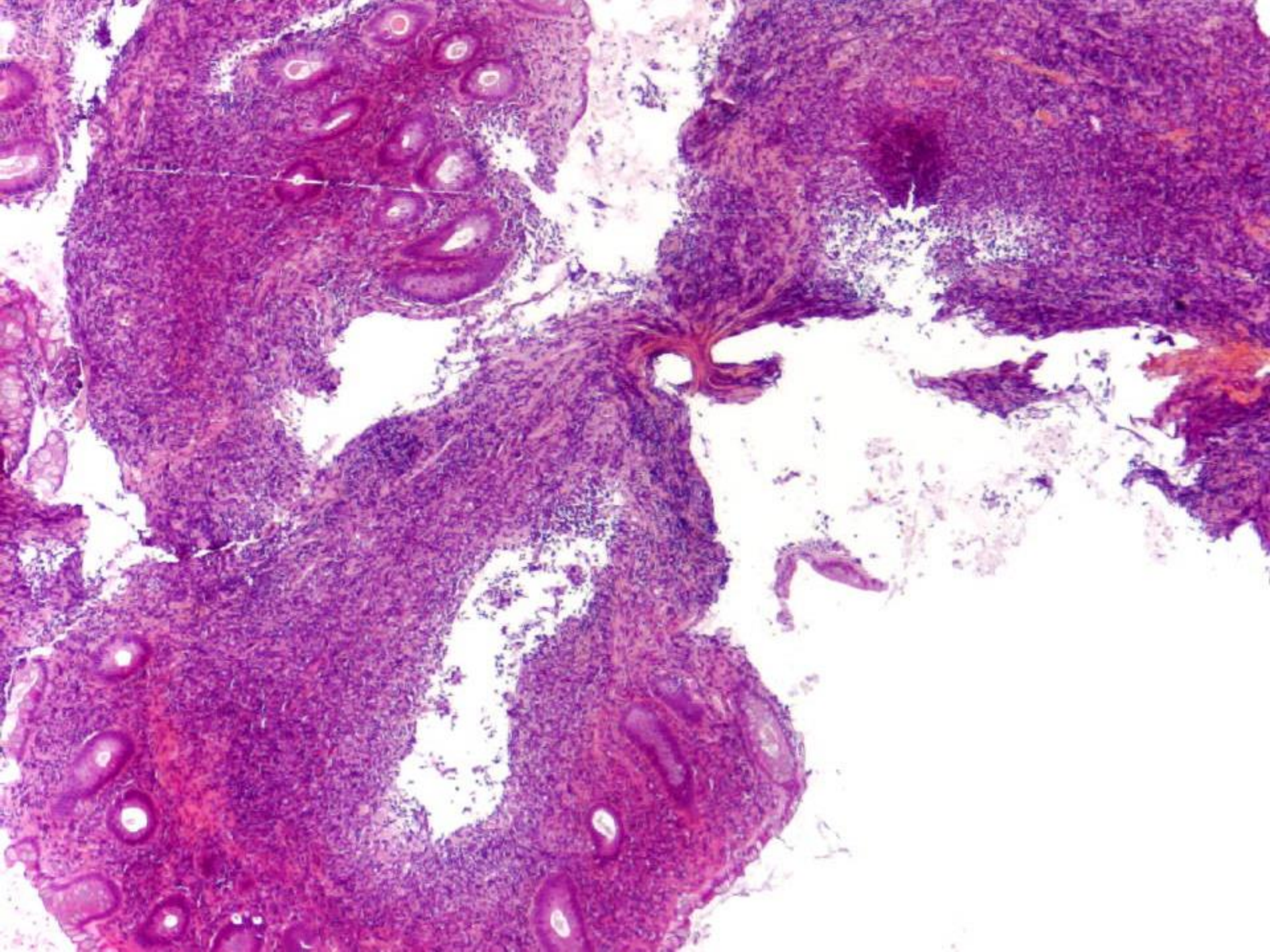
N° 3

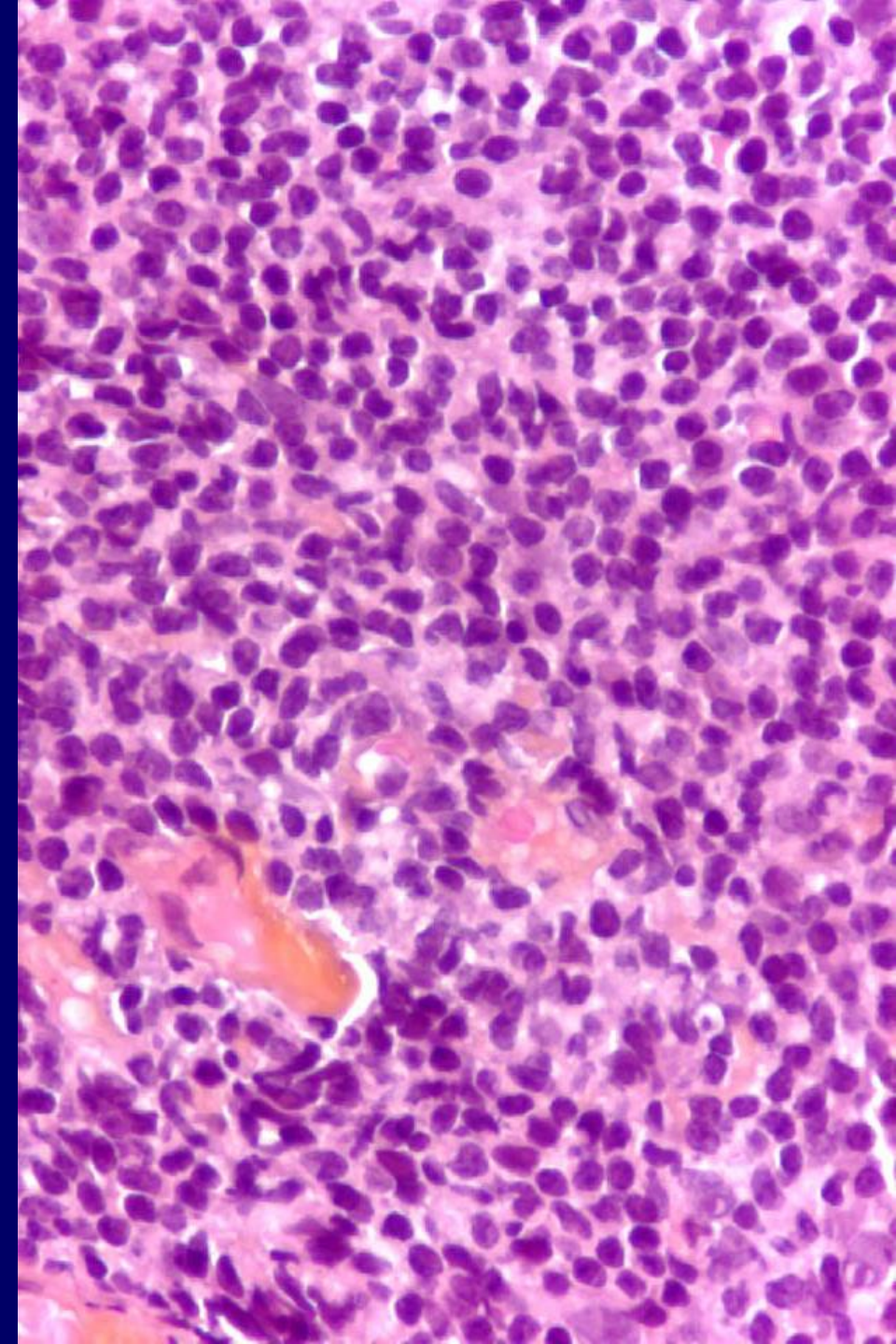
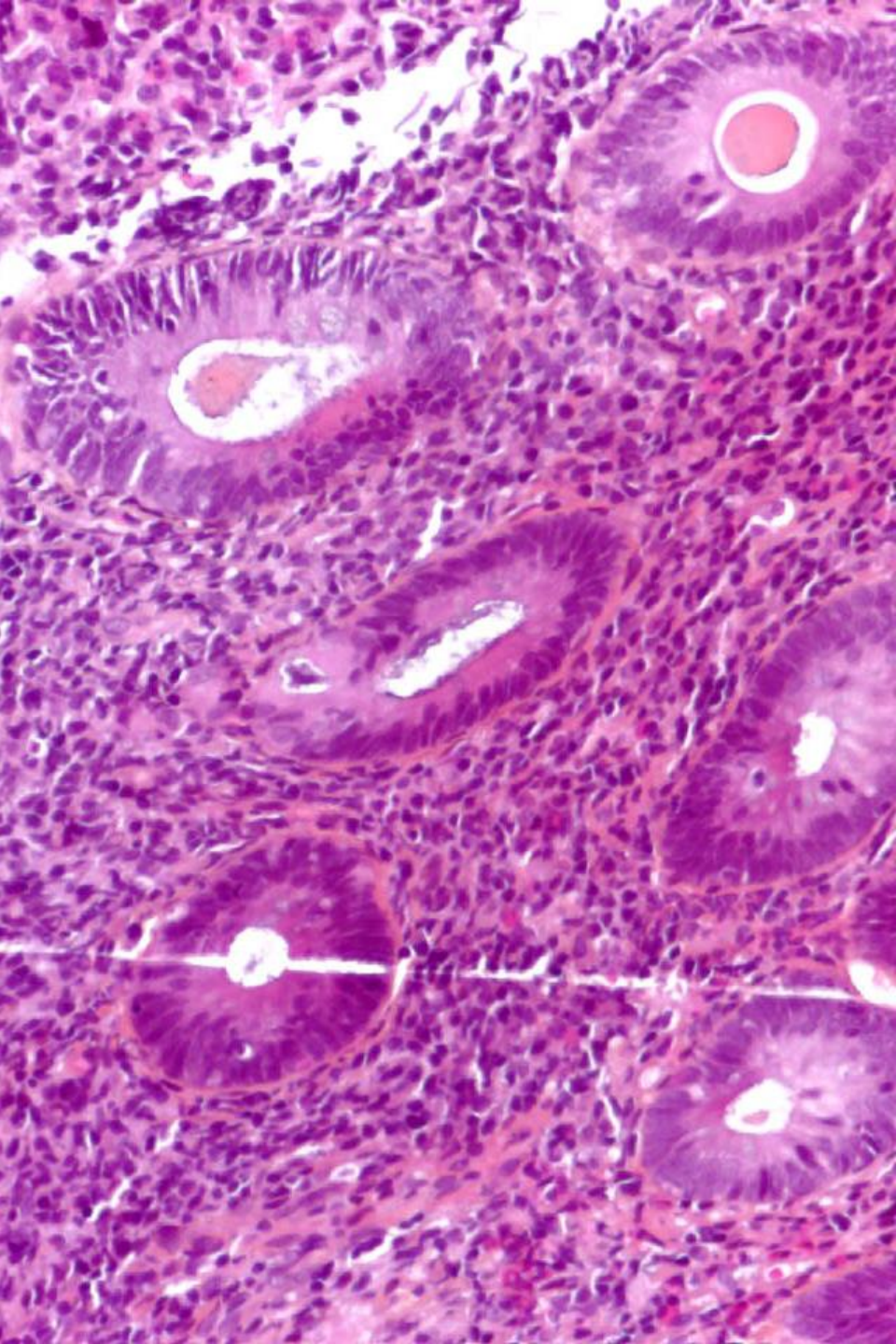
Hôpital Habib Thameur

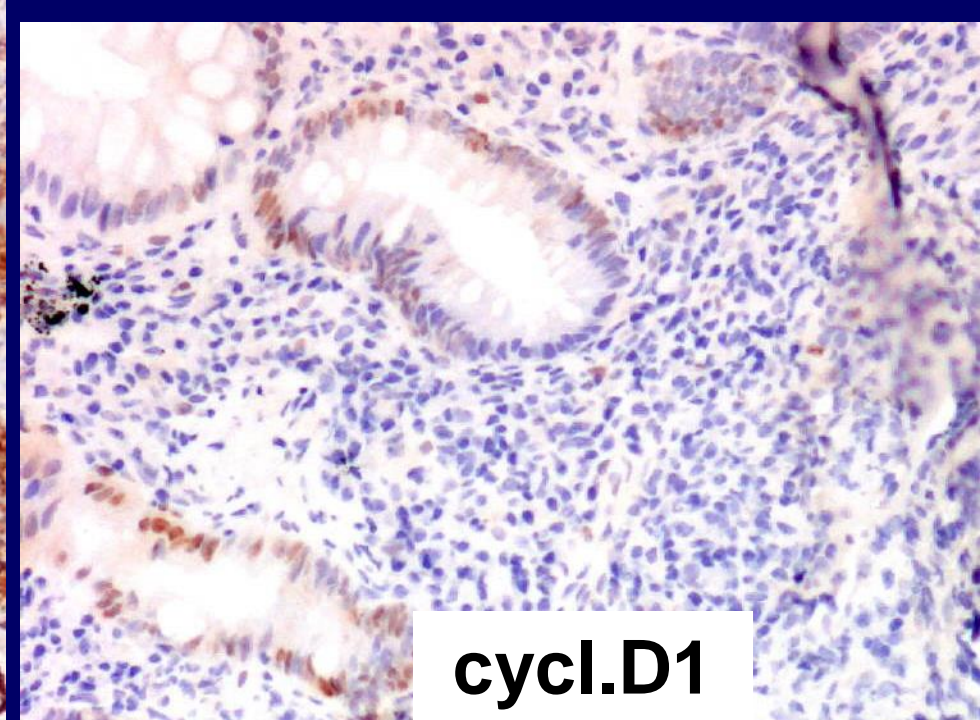
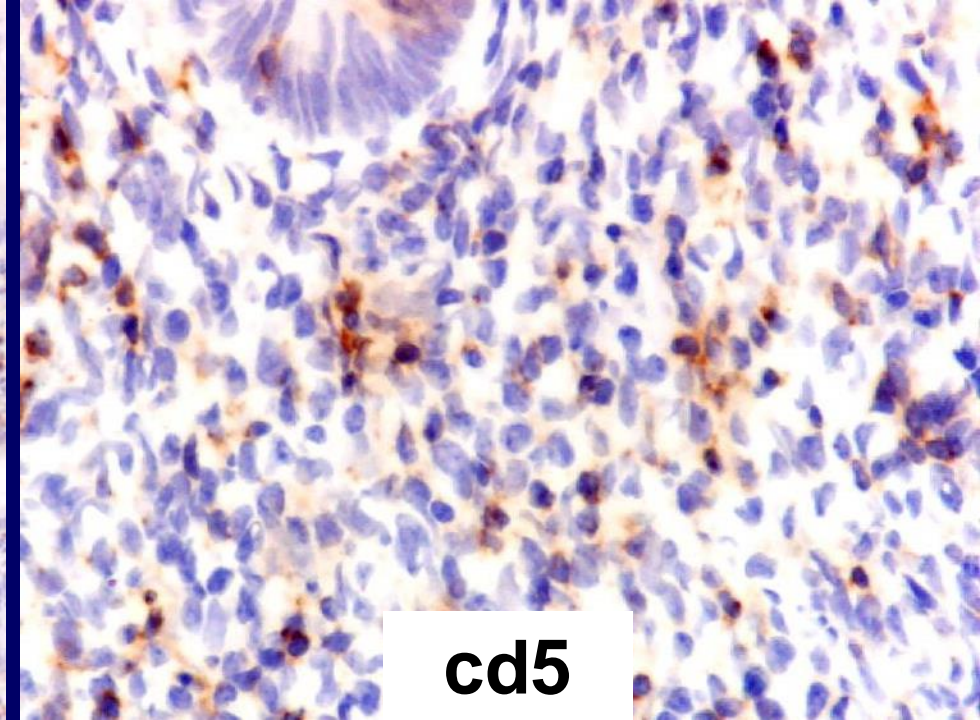
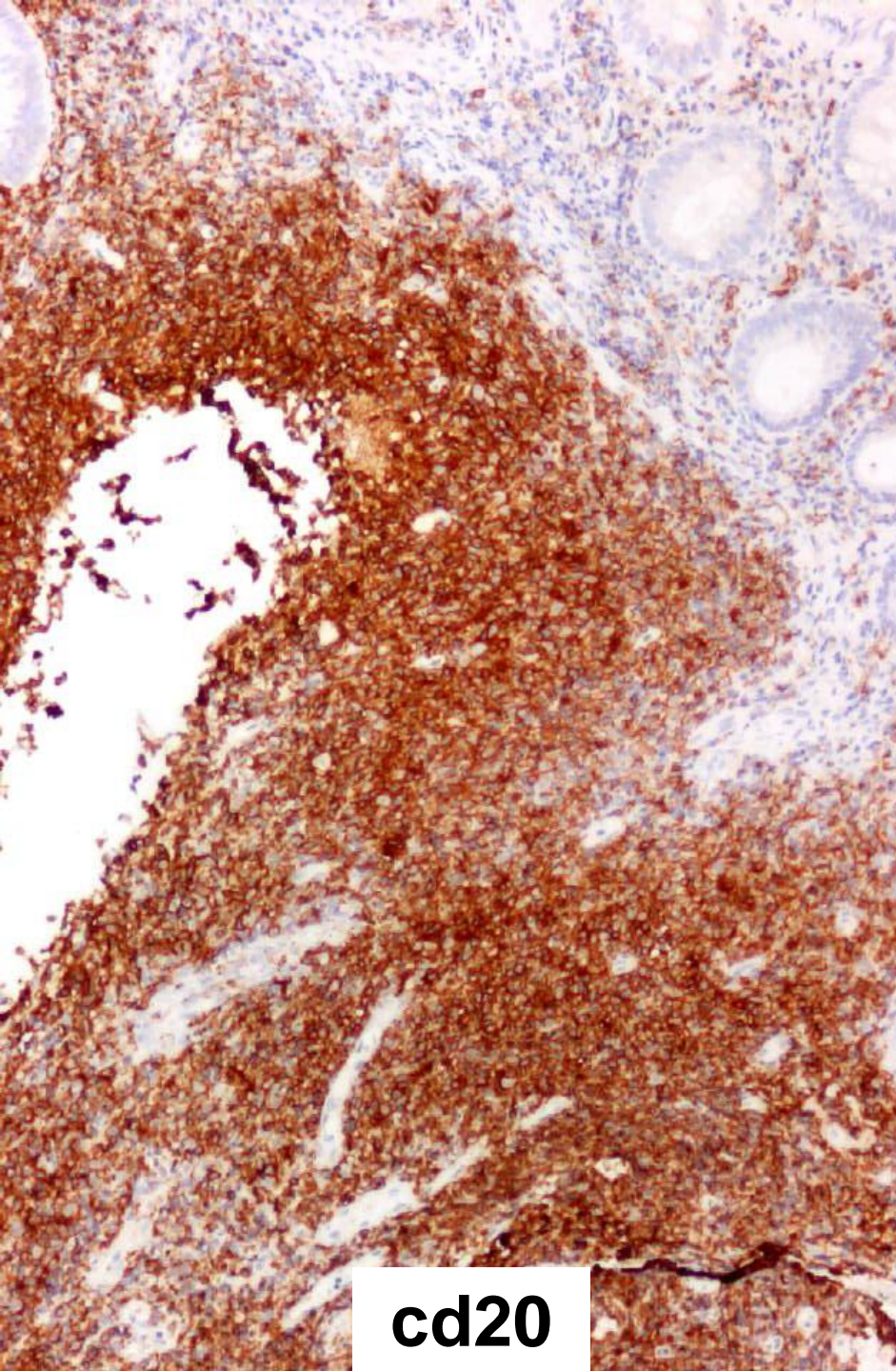
- Homme de 75 ans
- Ascite, épaissement pariétal du colon transverse
- LDH : 878

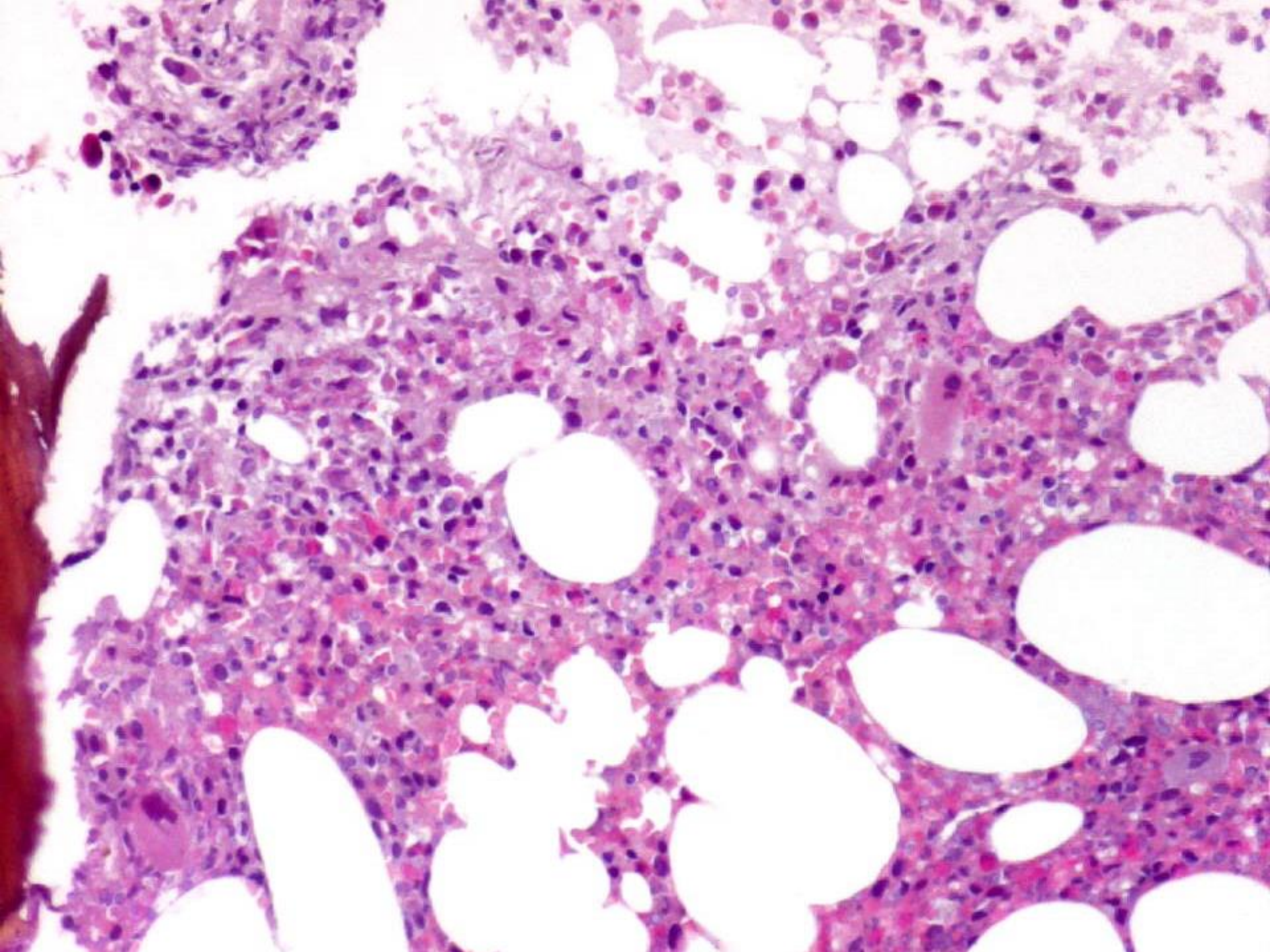
Biopsie colique, 119194

Biopsie médullaire 119351







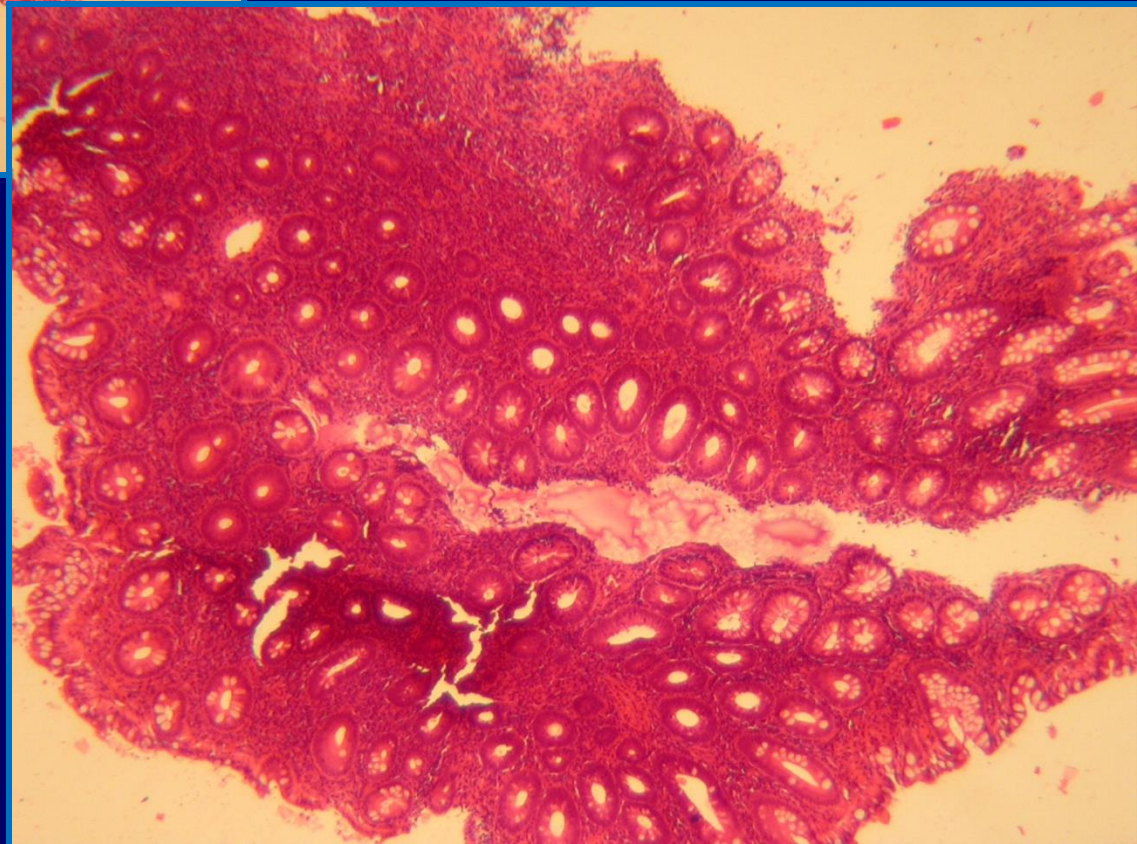
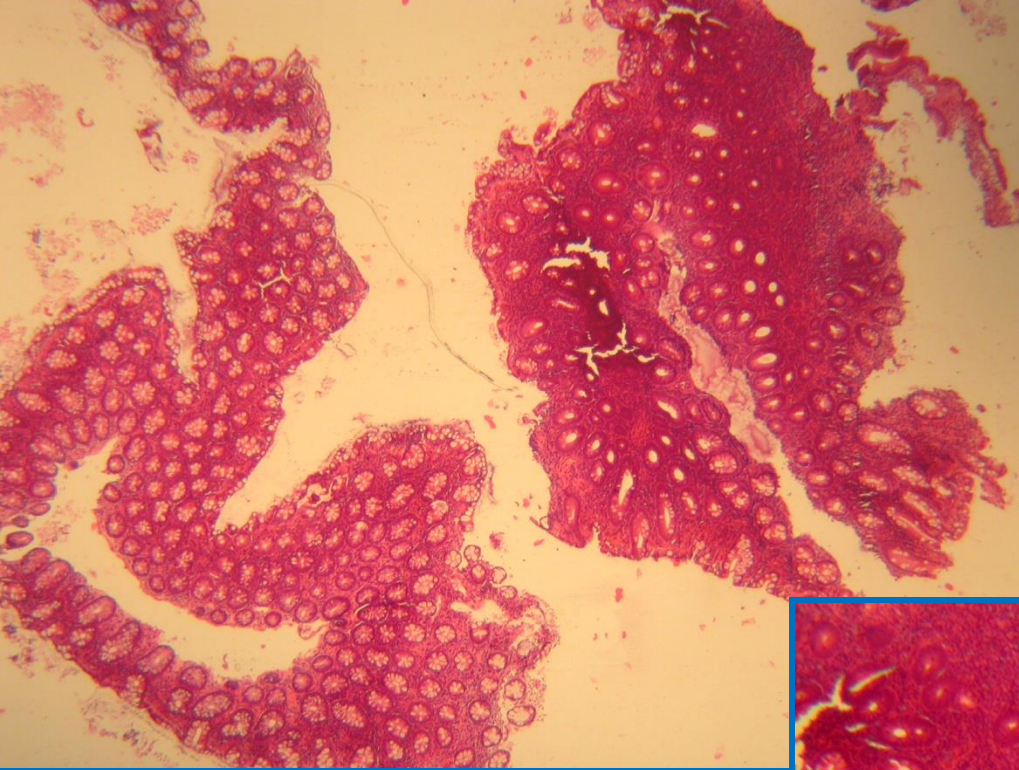


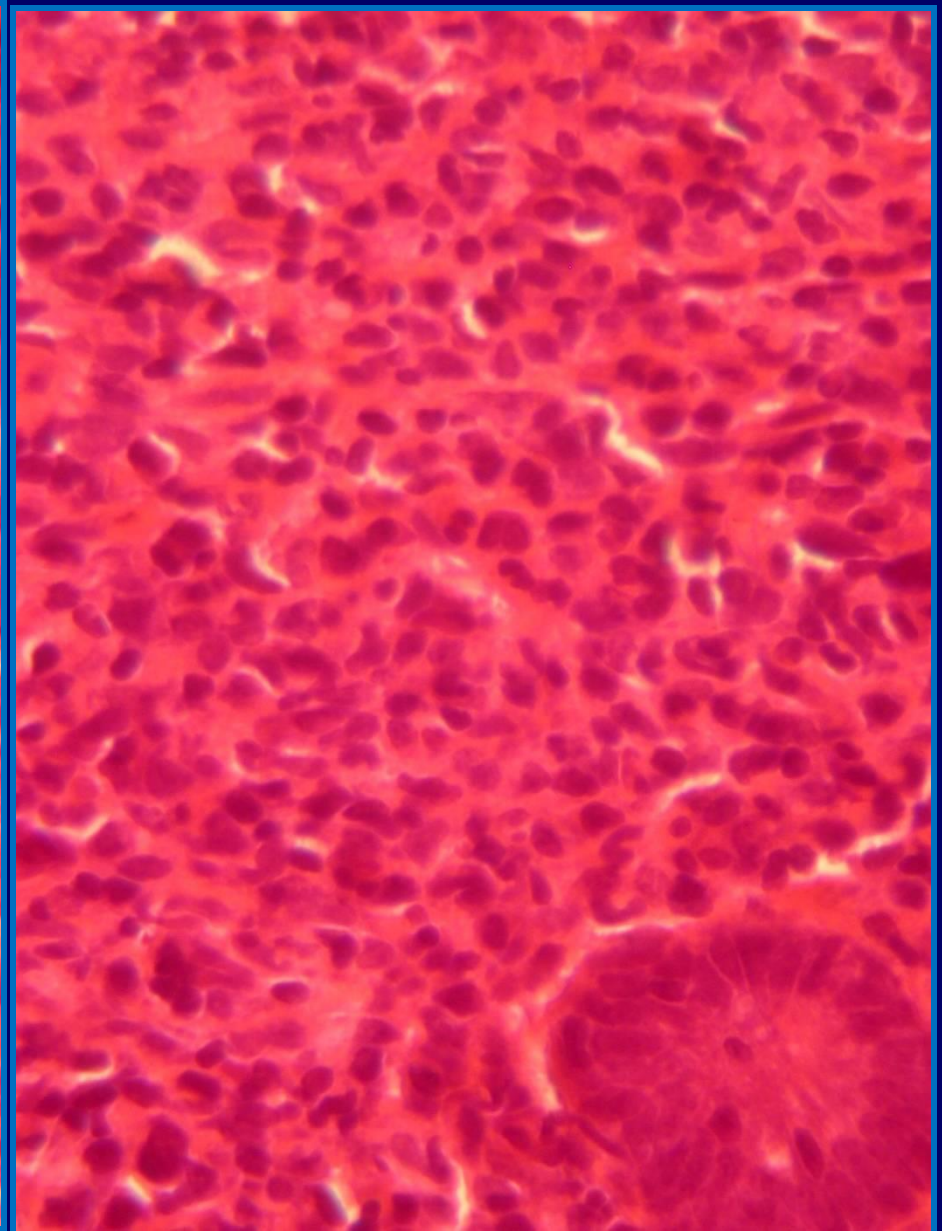
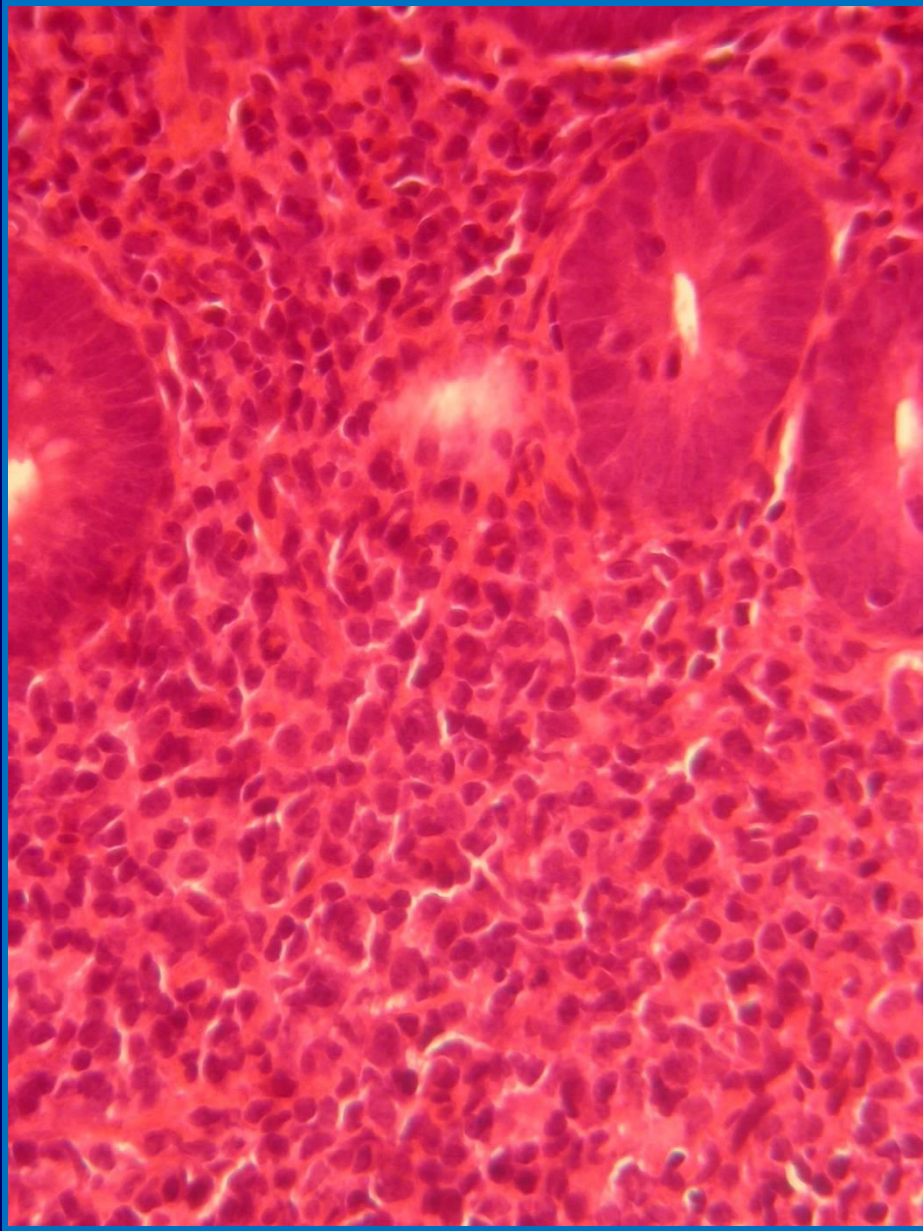
N° 3

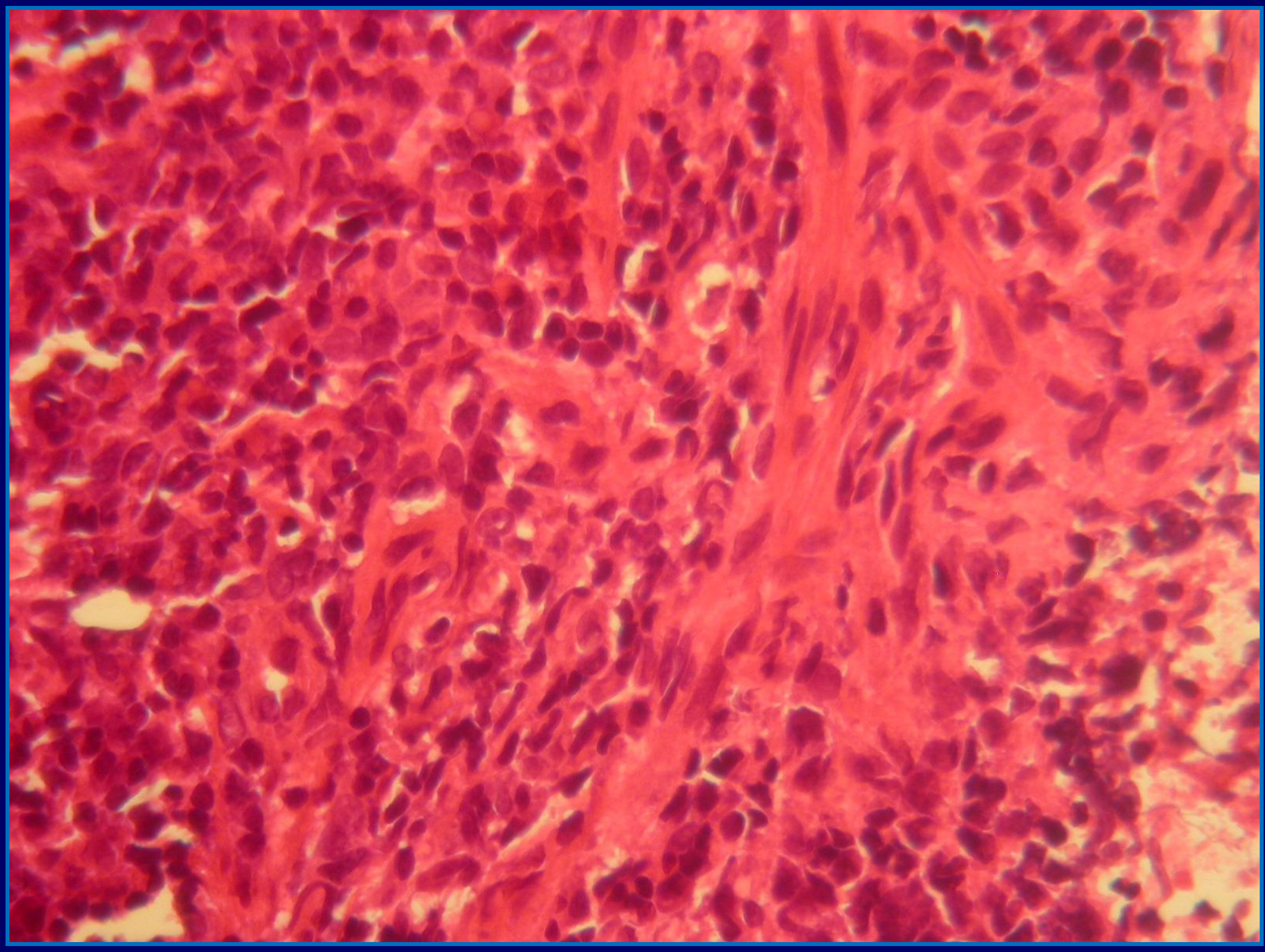
**Lymphome à petites c/ B cd20 + , cd5 - ,
Cycline D1 - , pas de monotypie**

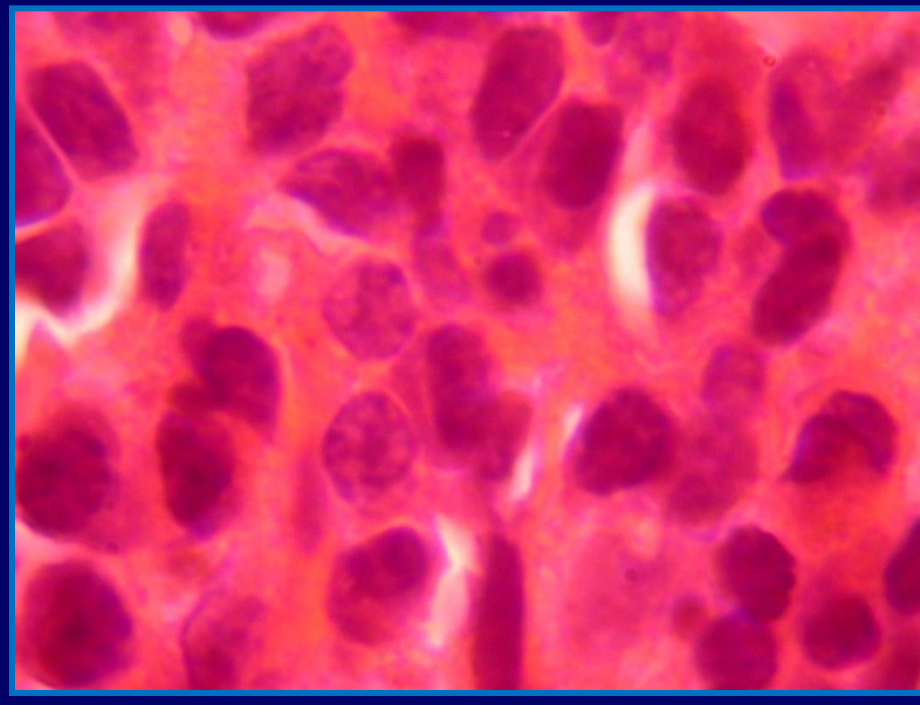
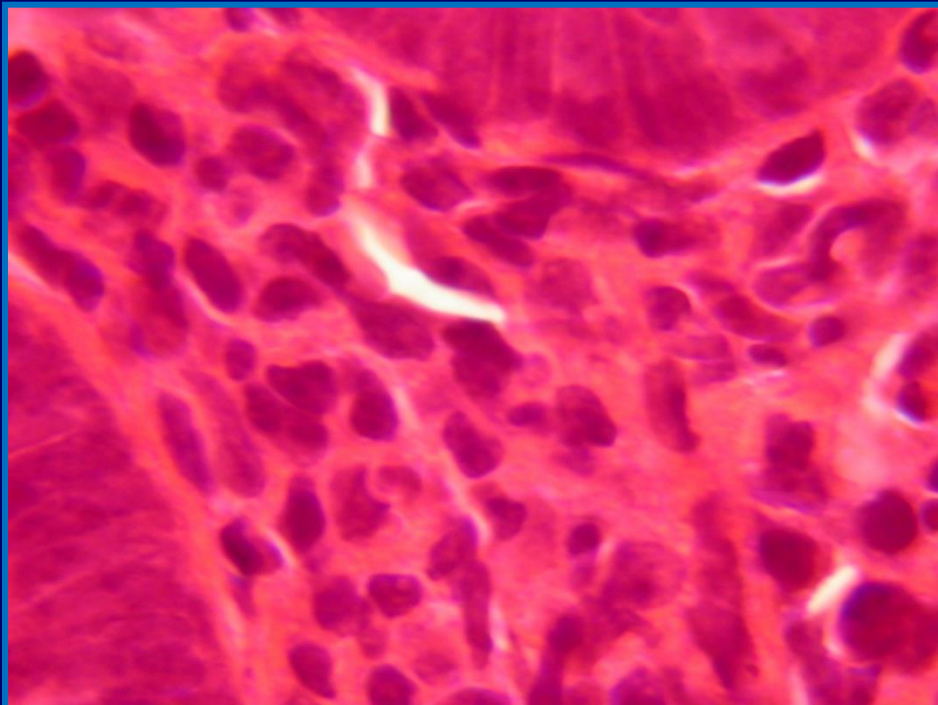
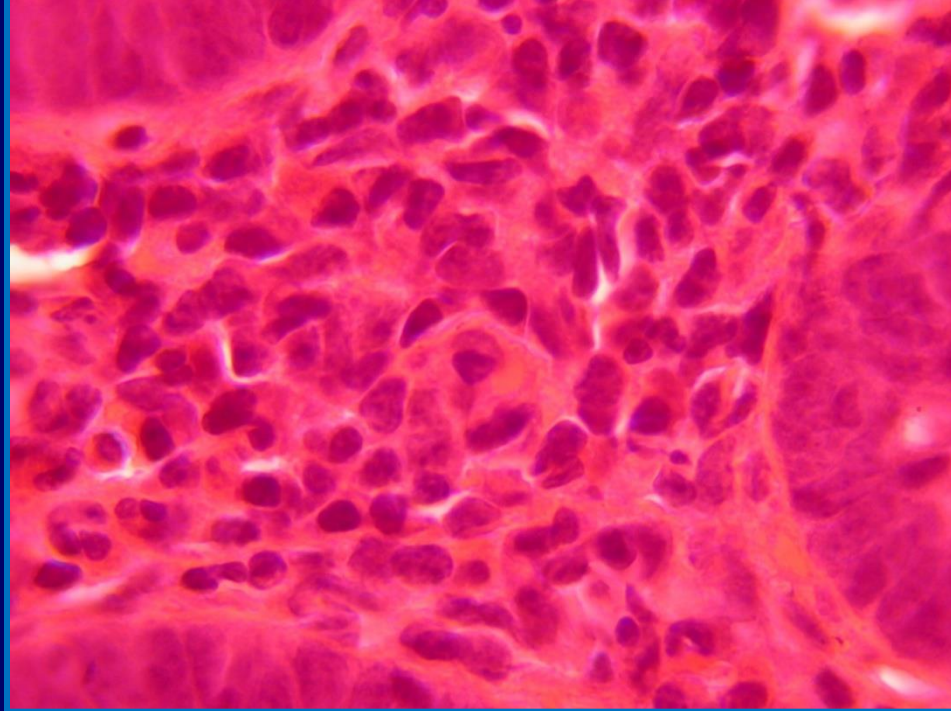
Moëlle négative

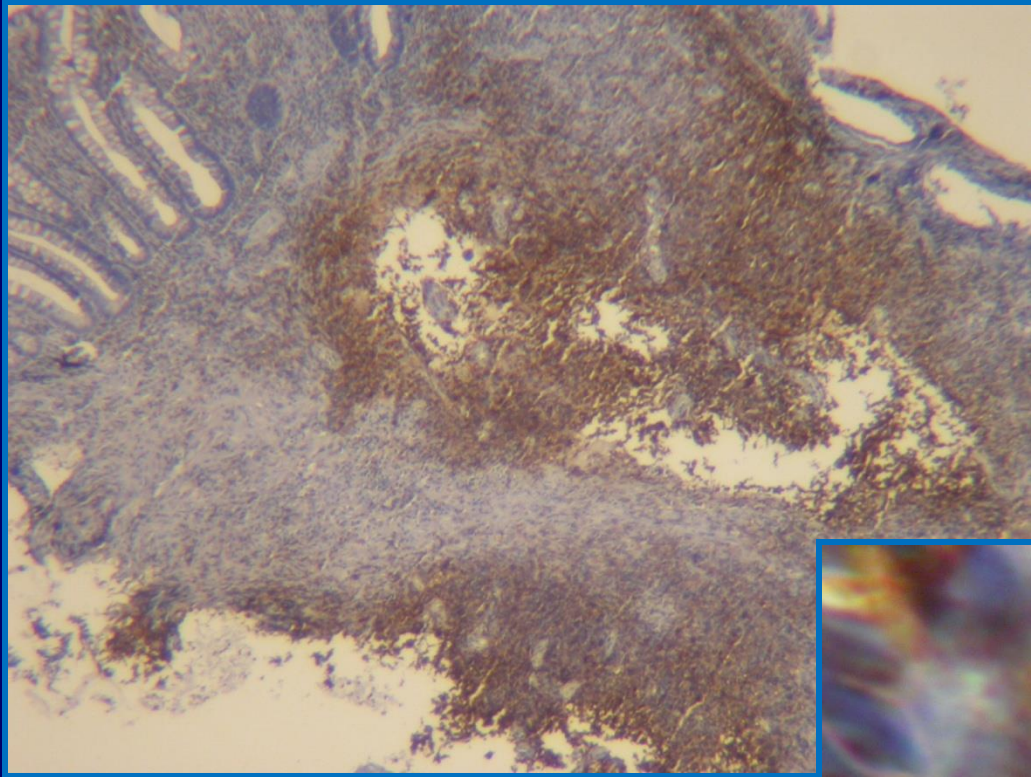
L du Malt >> L du Manteau



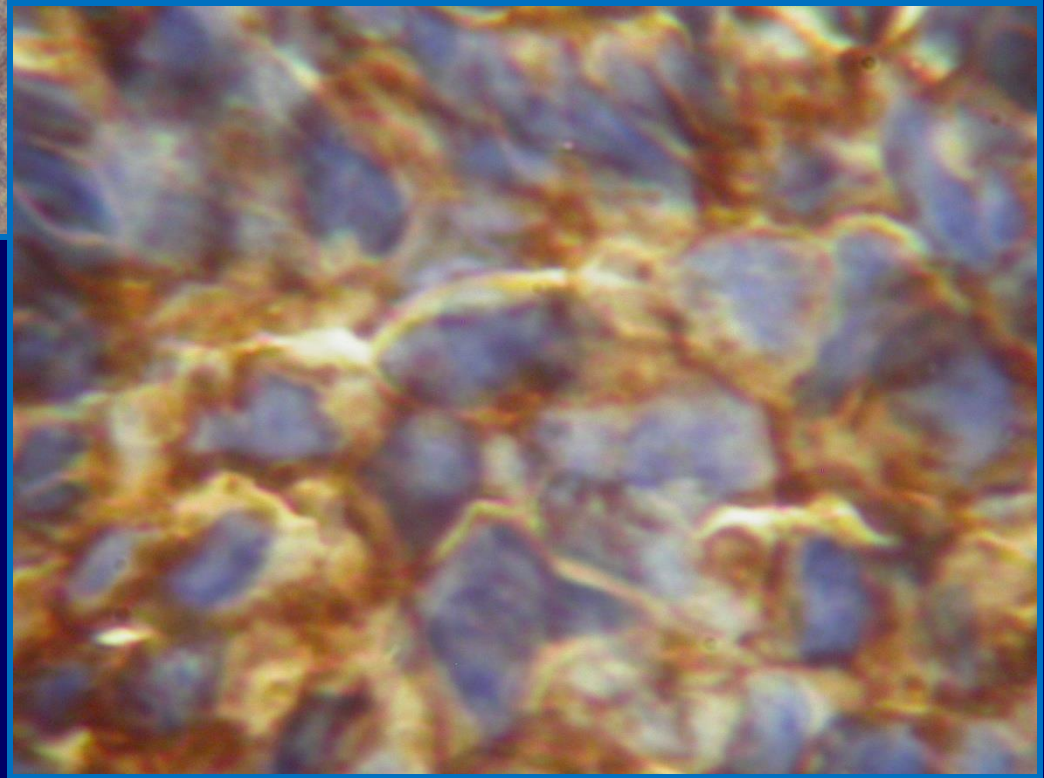




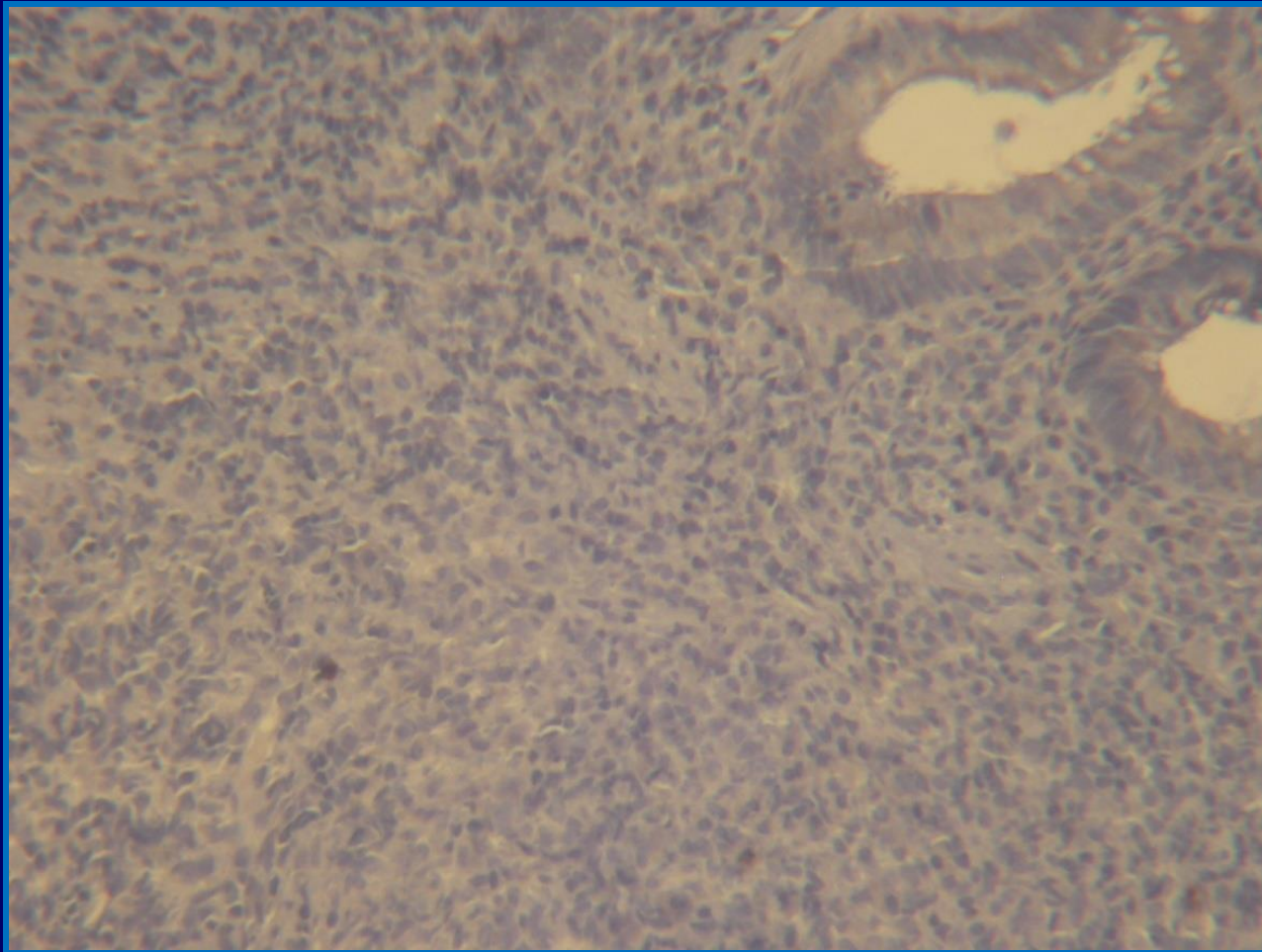




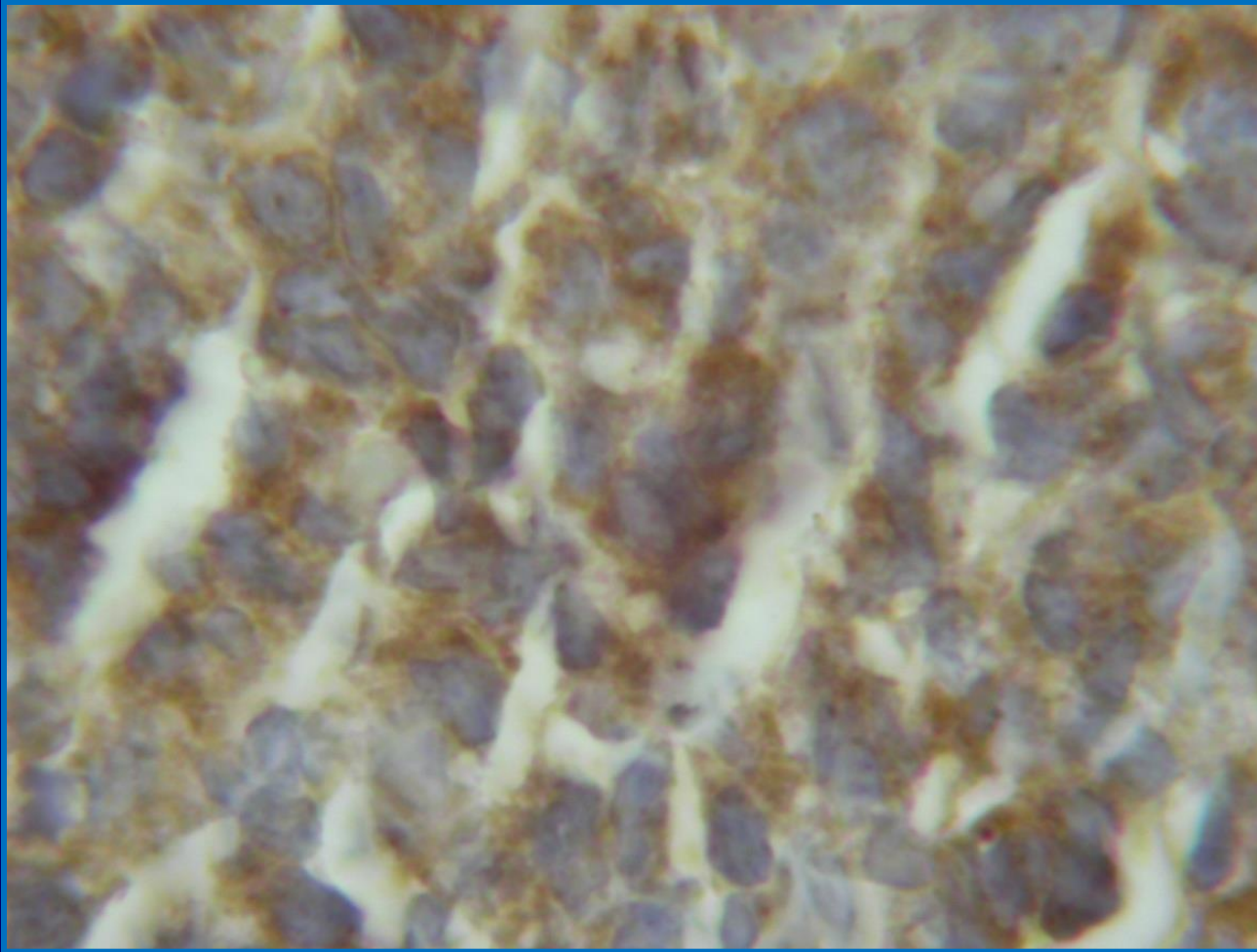
CD 20



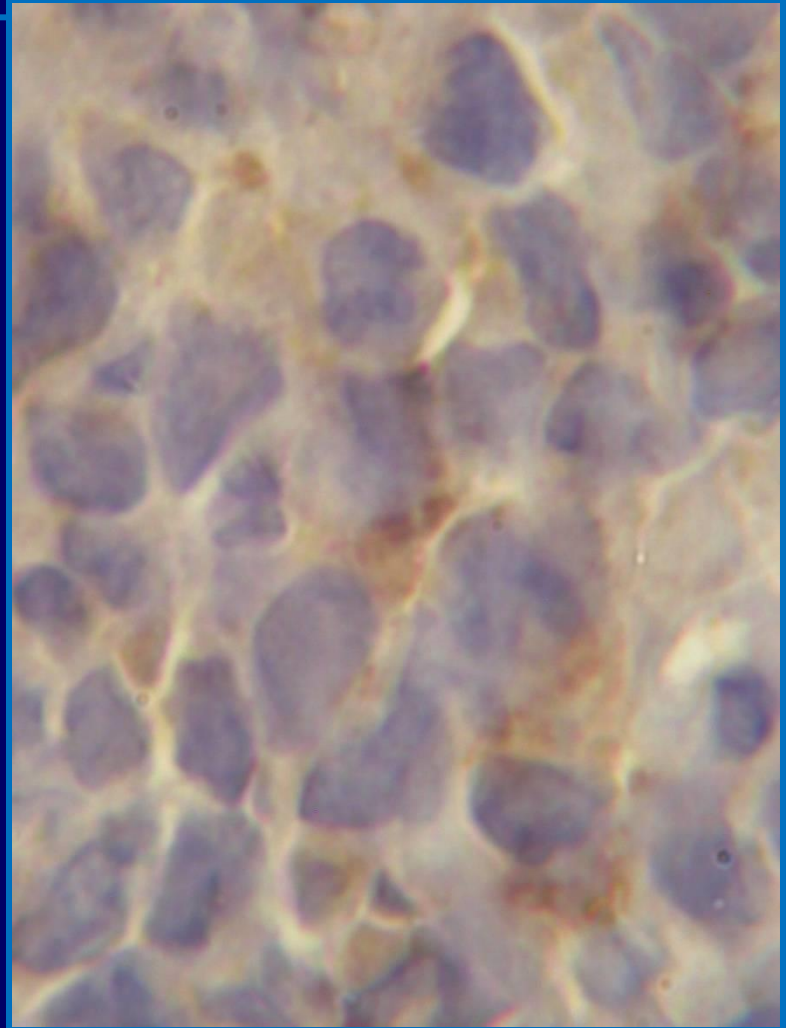
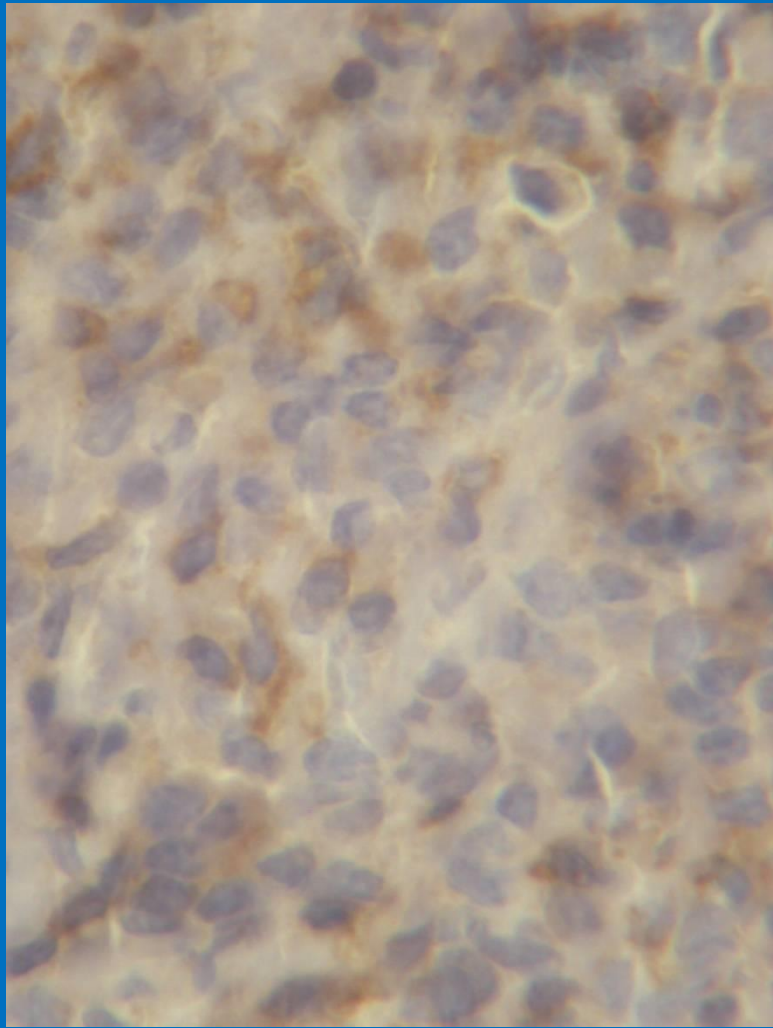
CD 10



CYCLINE D1

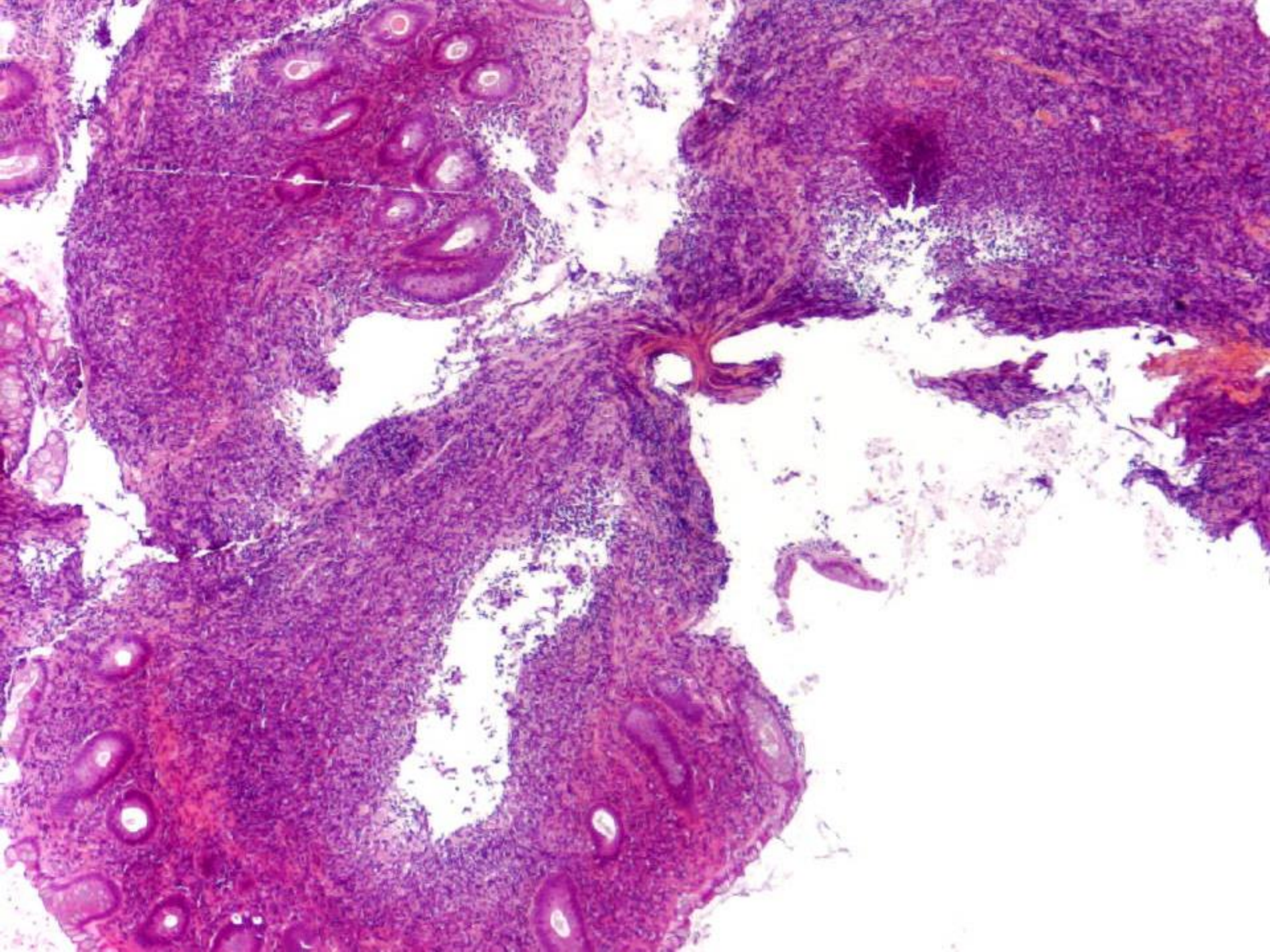


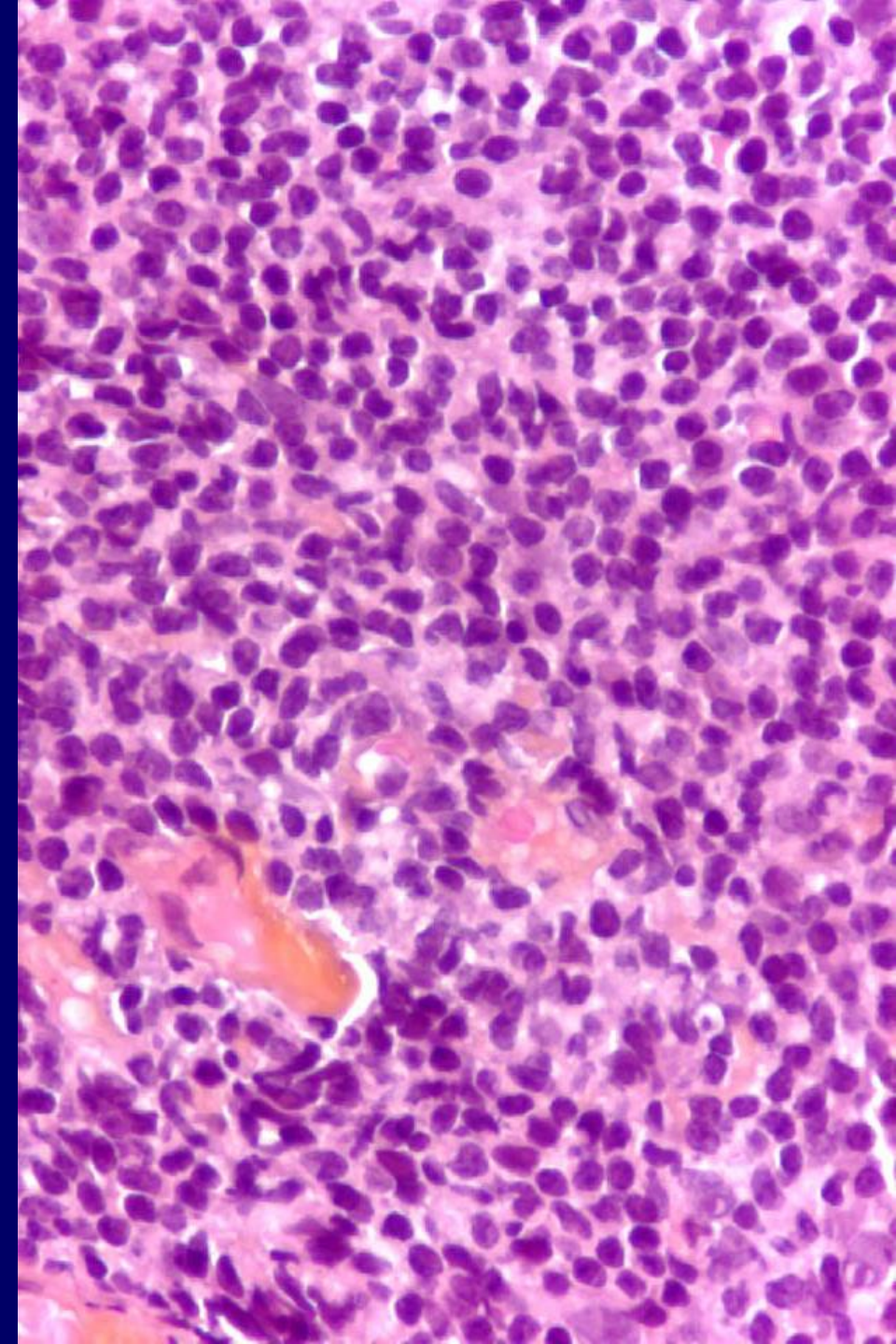
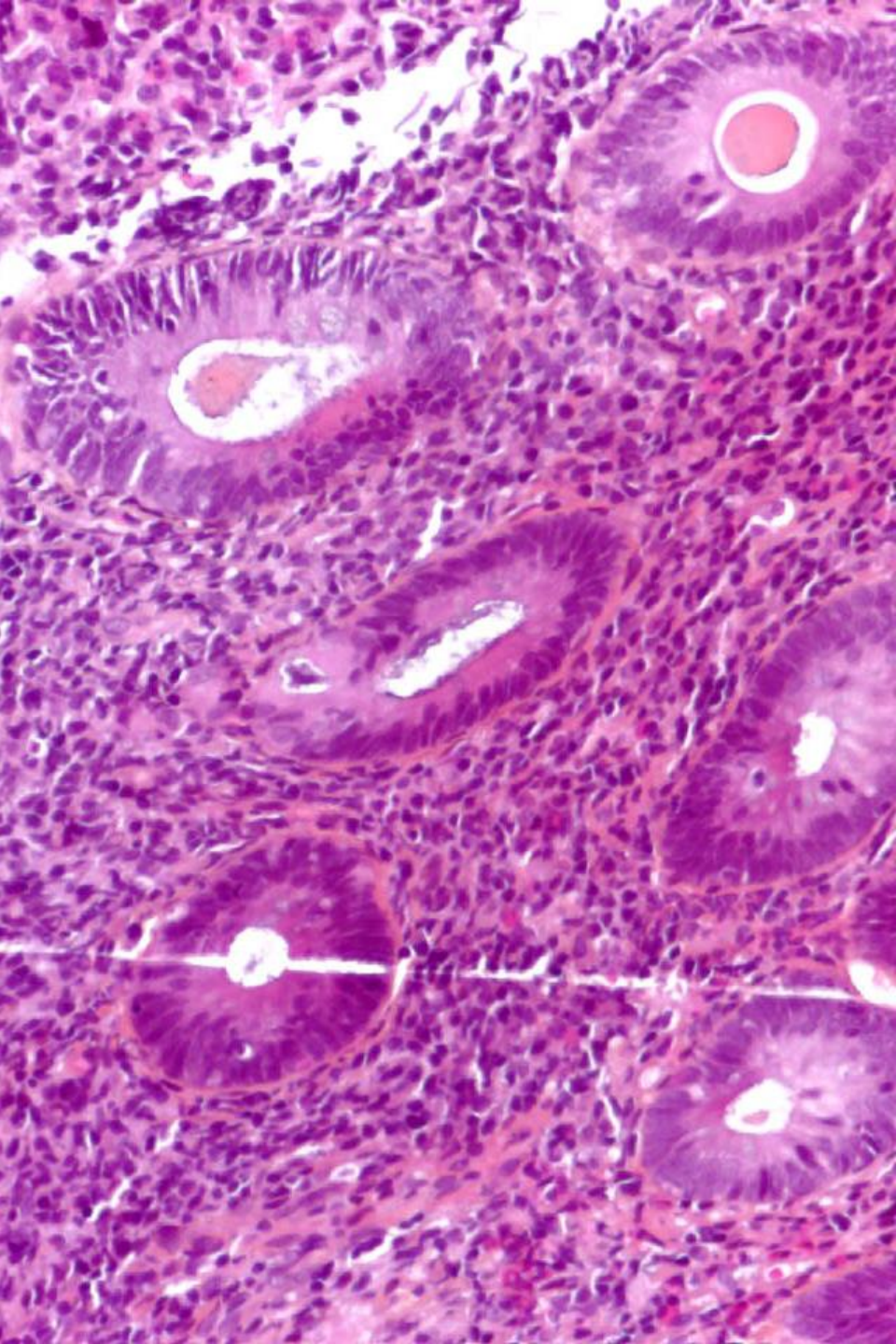
CD 5

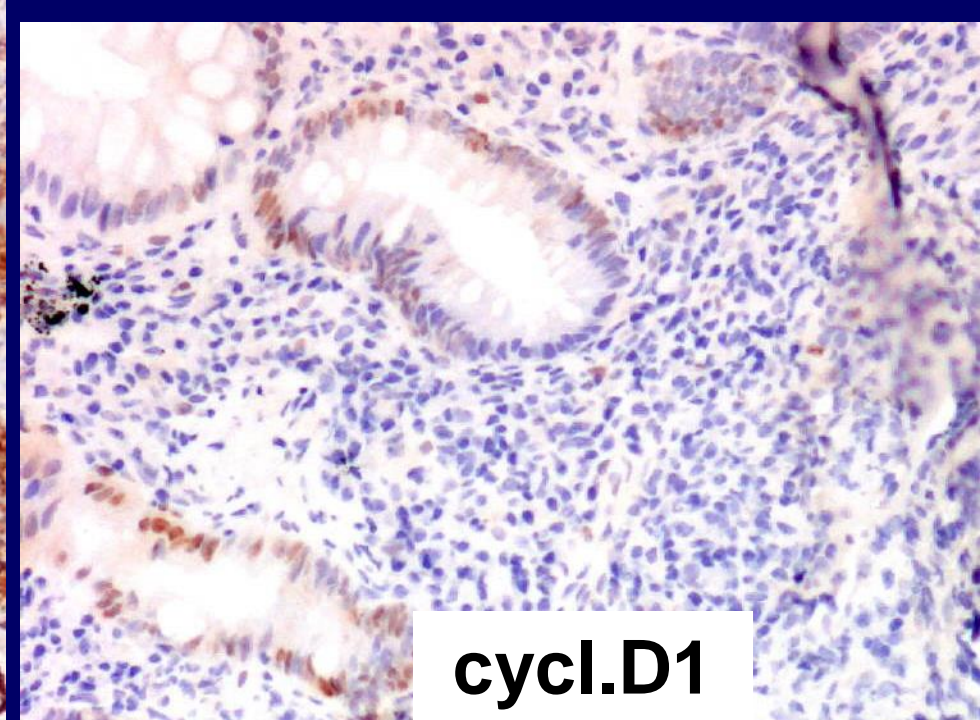
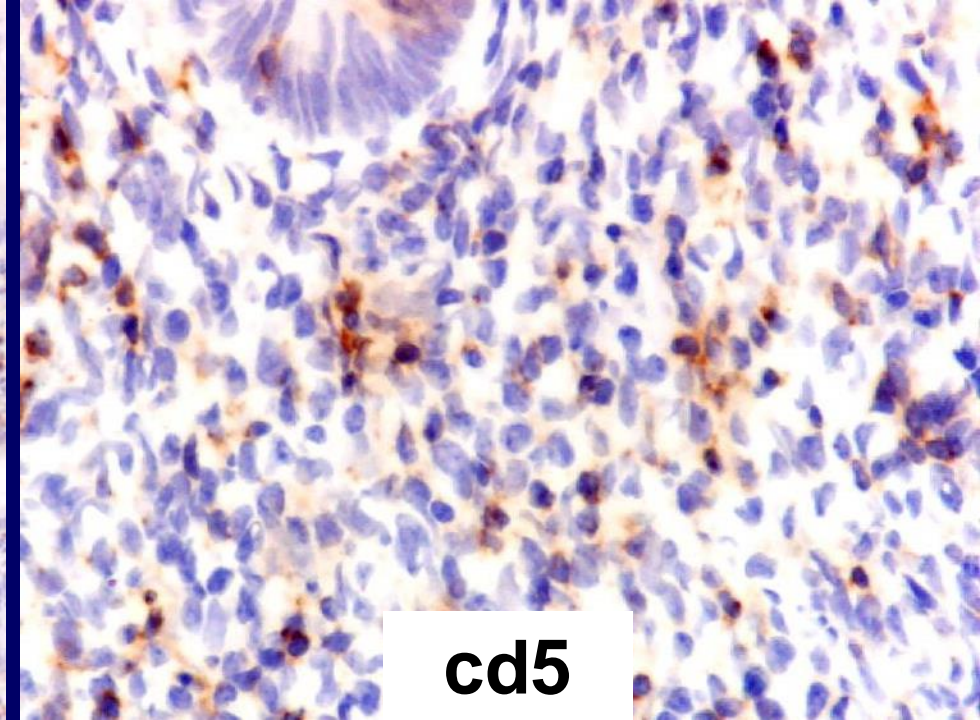
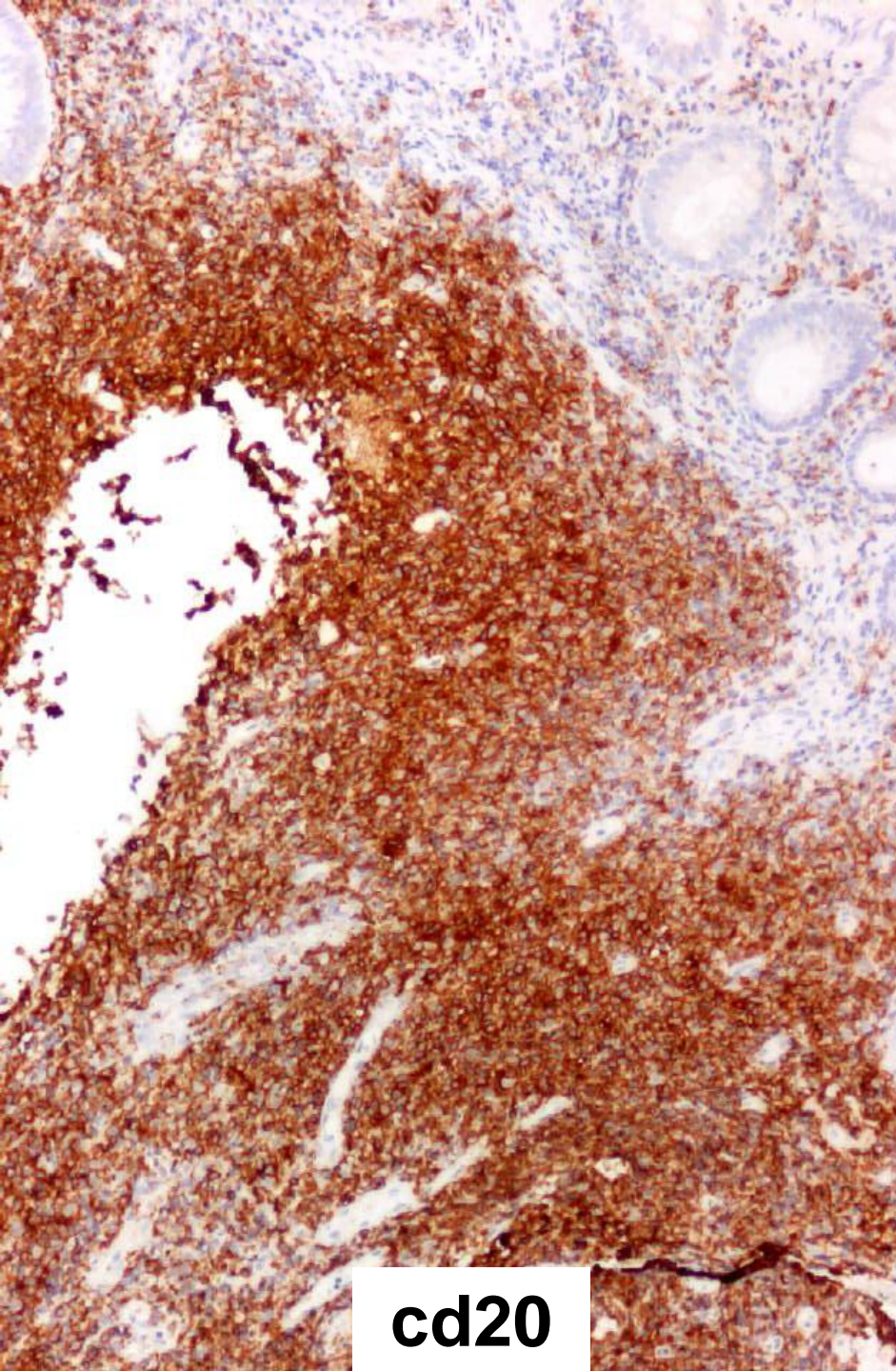


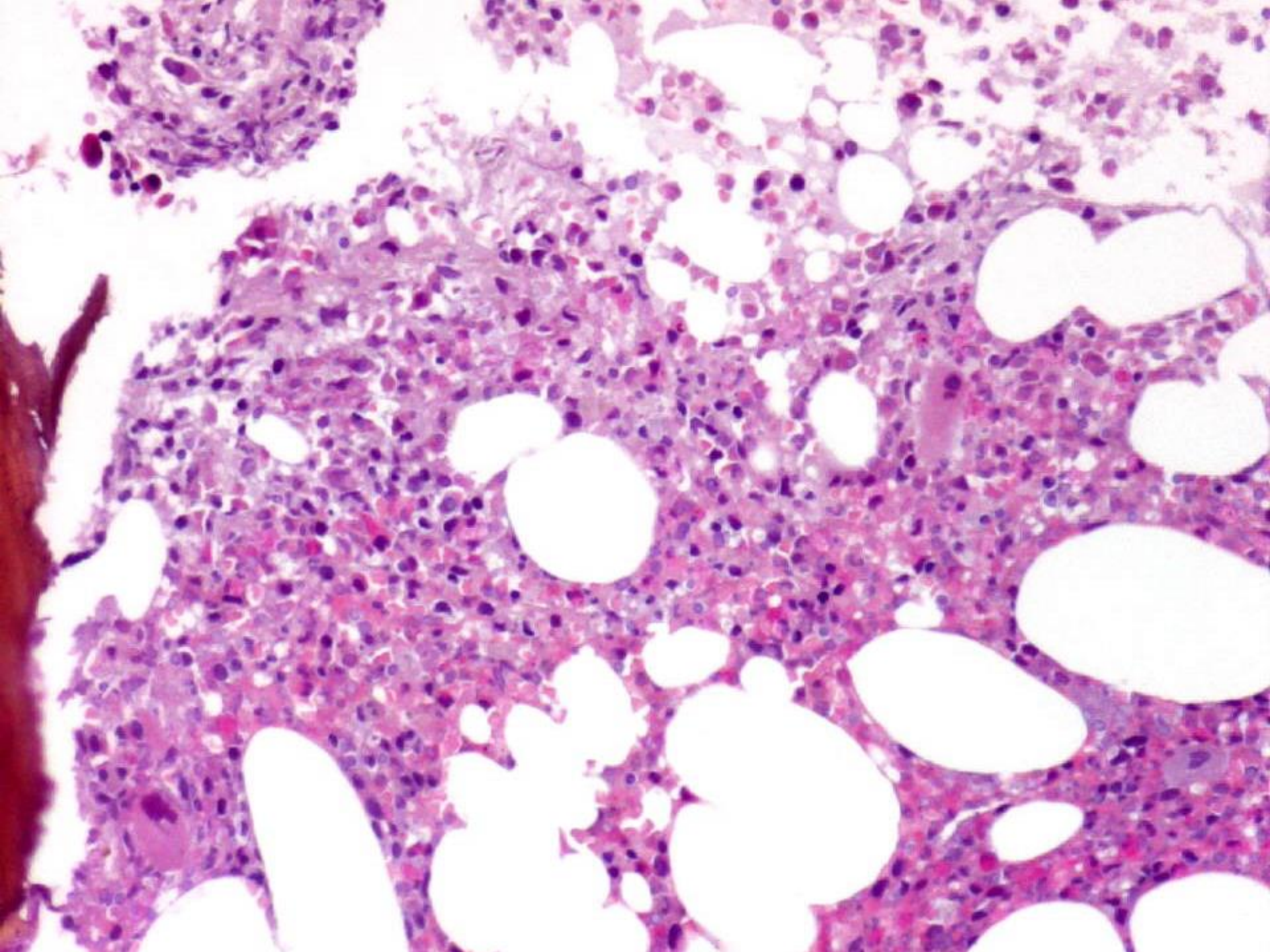
Aspect morphologique et phénotypique
compatible avec un lymphome du manteau

Avis Pr De Mascarel









Diagnostic retenu par Pr De Mascarel

**Lymphome à petites c/ B cd20 + , cd5 - ,
Cycline D1 - , pas de monotypie**

Moëlle négative

L du Malt >> L du Manteau